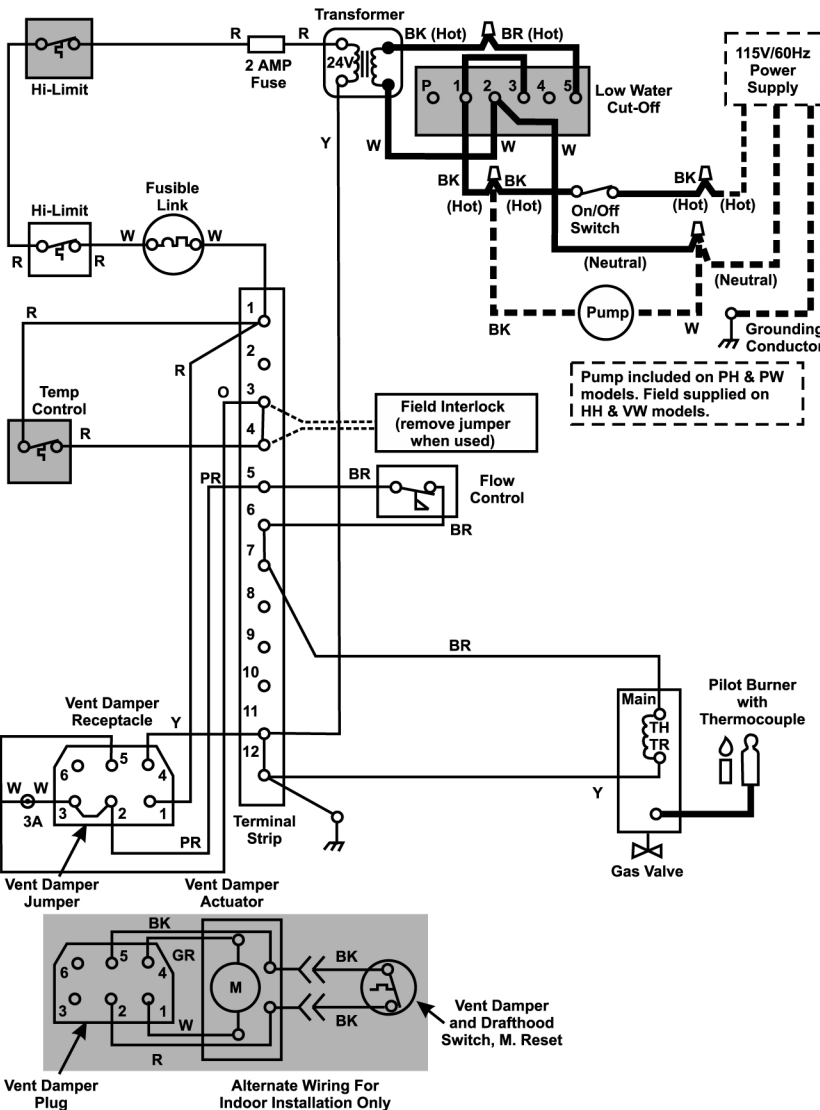


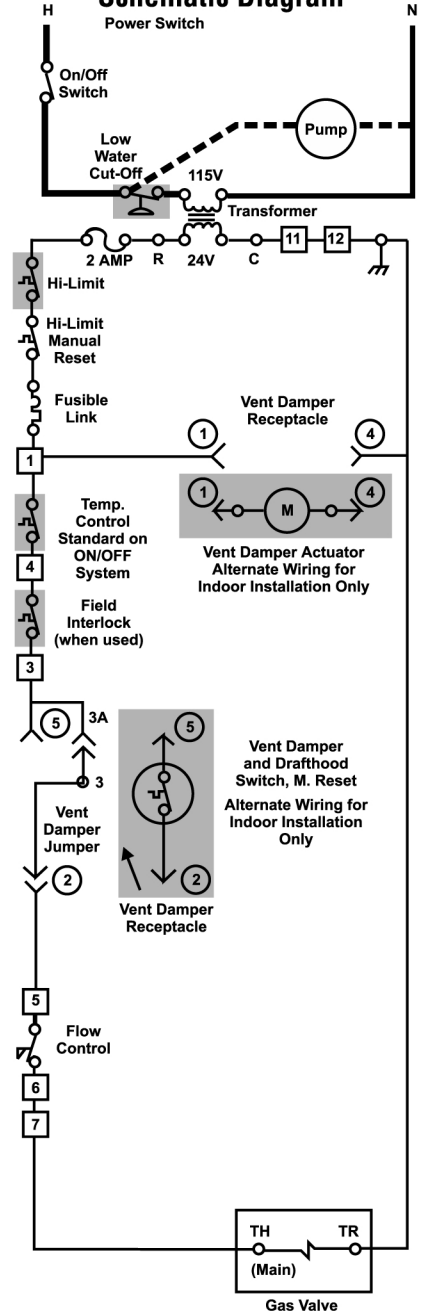
## TYPICAL WIRING DIAGRAM: IGNITION SYSTEM NO. 1 - STANDING PILOT ON/OFF OR MECHANICAL MODULATION

Example shown: HH and PH Hydronic Boilers (175-250) Version B  
Natural or Propane Gas

### Wiring Diagram



### Schematic Diagram



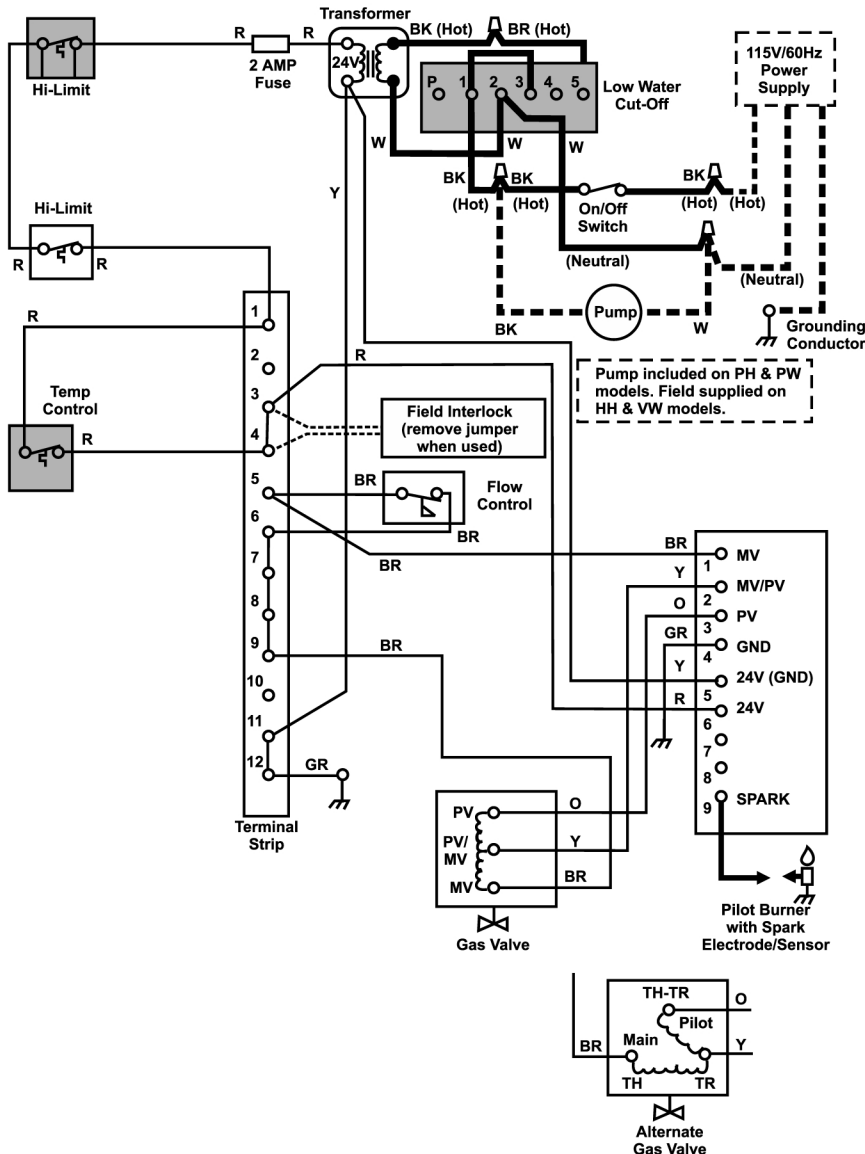
- LEGEND**
- ALTERNATE CONSTRUCTION
  - TERMINAL STRIP
  - VENT DAMPER CONNECTOR
  - FACTORY WIRING 24V
  - FIELD WIRING 24V
  - FACTORY WIRING 115V
  - FIELD WIRING 115V
  - BL - BLUE
  - BK - BLACK
  - BR - BROWN
  - GR - GREEN
  - O - ORANGE
  - R - RED
  - W - WHITE
  - Y - YELLOW

IF ANY OF THE ORIGINAL WIRE AS SUPPLIED WITH THE HEATER MUST BE REPLACED IT MUST BE REPLACED WITH APPLIANCE WIRING MATERIAL (105°C) OR ITS EQUIVALENT. WHITE WIRES TO FUSIBLE LINK MUST BE REPLACED WITH WIRE HAVING INSULATION RATED AT 200°C (AVAILABLE FROM FACTORY).

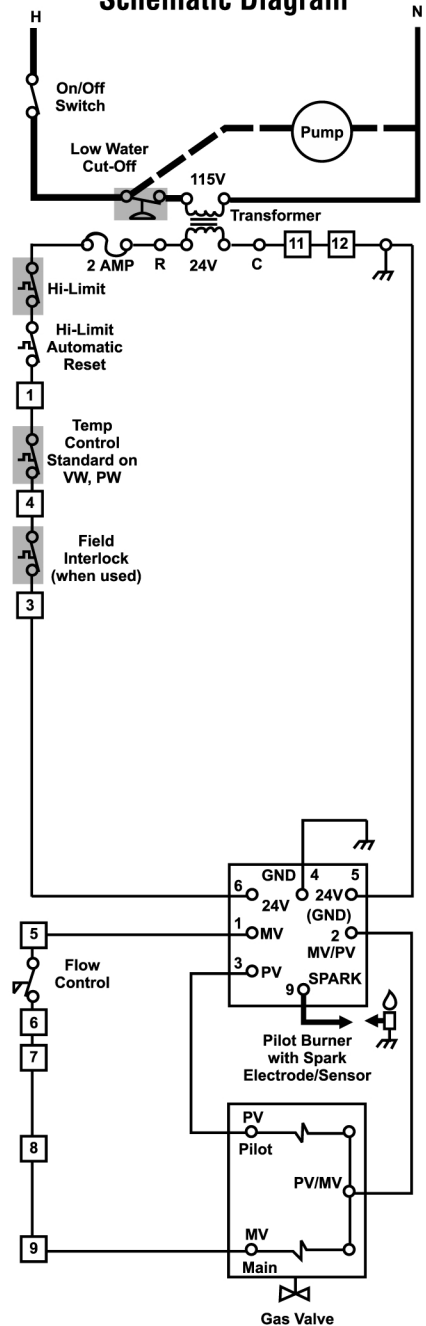
# TYPICAL WIRING DIAGRAM: IGNITION SYSTEM NO. 12 - ELECTRONIC IGNITION ON/OFF OR MECHANICAL MODULATION

Example shown: HH and PH Hydronic Boilers (325-400) Version B  
Natural or Propane Gas

### Wiring Diagram



### Schematic Diagram



#### LEGEND

- |                        |            |            |
|------------------------|------------|------------|
| ALTERNATE CONSTRUCTION | BL - BLUE  | R - RED    |
| TERMINAL STRIP         | BK - BLACK | W - WHITE  |
| FACTORY WIRING 24V     | BR - BROWN | Y - YELLOW |
| FIELD WIRING 24V       | GR - GREEN |            |
| FACTORY WIRING 115V    | O - ORANGE |            |
| FIELD WIRING 115V      |            |            |
- H0115600F

IF ANY OF THE ORIGINAL WIRE AS SUPPLIED WITH THE HEATER MUST BE REPLACED IT MUST BE REPLACED WITH APPLIANCE WIRING MATERIAL (105°C) OR ITS EQUIVALENT. WHITE WIRES TO FUSIBLE LINK MUST BE REPLACED WITH WIRE HAVING INSULATION RATED AT 200°C (AVAILABLE FROM FACTORY).